

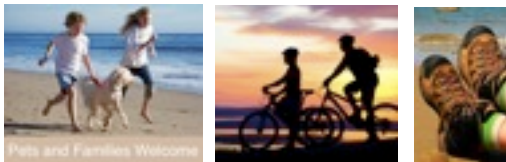


Modern facilities – traditional setting

The village of Seahouses lies on the North Northumberland Coast, historically having been famed for its fishing, kipper houses, lime production and grain exports. Today, although fishing is still continued, the main thrust is tourism, with many of the traditional stone-built smoke houses and yards having been converted into holiday cottages.

Hastings is a new build situated about half a mile inland from the harbour on a piece of land close to the church which was farmland prior to it being used as boat storage in more recent years.

The house has been tastefully designed by the owners with holiday makers in mind, offering the convenience of modern living with traditional furnishings and finishes, The outside space has been well thought out to maximise the relaxation opportunity, particularly with the large hot tub on the deck.



HASTINGS HOUSE PRICES 2010 7 Nights – FRI > FRI		Short Break 3 night – Fri, Sat Sun 4 night Mon–Thurs LA = Late availability only.
3 Jan – 11 Feb	£975*	£750
12–18 Feb	£1,950	£1300 / £1100
19 Feb – 1 Apr	£975*	£750
2 – 15 Apr	£2,250	£1300 / £1100
16 Apr – 29 Apr	£975*	£750
30 Apr – 6 May	£1,950*	£1300 / £1100
7–27 May	£975*	£750
28 May – 3 June	£2,250	£1300 / £1100
4 June– 15 July	£1,350	£875
16 July – 9 Sept	£2,250	£1300 / £1100
10 Sept – 14 Oct	£1500*	£975
15 – 28 Oct	£2,250	£1300 / £1100 LA
29 Oct – 17 Dec	£975 *	£750
18 Dec–1 Jan 11 Tues–Tues Xmas & Near	£2,500	£1750 LA
Dogs each per stay	£20	£20
Deposit per week or part	20%	20%
Good Housekeeping bond	£250	£250
* Three bedroom option on these weeks (downstairs)	– 10%	Not applicable on short break prices
* Two bedroom option on these weeks (upstairs)	– 15%	Not applicable on short break prices
Yellow or LA denotes school holiday, bank holiday high season rates. Generally during these periods short breaks are only accepted at last minute. Prices VAT inclusive at current rate.		

Full terms and conditions available on request or visit our website for details and to book online: www.hastingshouse.info

Hastings House

Seahouses Northumberland

Visit Britain Graded 5 Star Gold



Modern Facilities Traditional Setting

5 Bedrooms, 5 bathrooms - flexible sleeping accommodation for up to 11 persons

Plus a Hot Tub

Non-smoking; Pets welcome by arrangement.

Correspondence:

Jackie & Neil Forsyth

Westfield Farmhouse, Seahouses,
Northumberland NE68 7UR

Tel: 01665 721380

email info@hastingshouse.info

web: www.hastingshouse.info



NORTHUMBRIA - A SECRET KINGDOM

Ideally situated –

The house is superbly situated for exploring the extensive Northumbrian beaches and dunes, and the many castles within 20 miles. Inland you can visit the National Park and Cheviot Hills; to the south lies the market town of Alnwick, its castle and the Alnwick Garden; to the North, Bamburgh, Berwick and Edinburgh.



Well equipped and flexible

With all 5 bedrooms having zip and link beds we can accommodate King-size doubles or twins in any combination. 3 rooms are en-suite and there is a downstairs shower room and an upstairs bathroom.

Downstairs there is a large kitchen equipped with everything to make a sandwich or a gourmet meal, two dishwashers, a range cooker with ceramic hob, american fridge freezer and all the crockery, cutlery and preparation equipment you could wish for..

The large family dining room seats up to 12 around the huge bespoke oak table and the TV on the chimney breast provides full sky package. There is a double-sided log burner between the kitchen and dining room. This room leads out to the spacious deck for alfresco dining and the 6 person hot tub.

Our lounge is on the first floor providing a 2nd sky package TV, DVD. CD/Radio/Cassette mp3 player, log burning stove, seating for all and views to die for.

Prices include bedding, bed linen, towels, electricity. Underfloor heating downstairs, Solar Water heating, logs for the fires. A localised

welcome pack is also included.

Upstairs

Bedroom 1 front, balcony Super Kingsize double or twin.

Bedroom 2 rear, en-suite shower room Super Kingsize double or twin

Downstairs

Bedroom 3 front, Super Kingsize double or twin

Bedroom 4 rear – en-suite Kingsize double or twin

Bedroom 5 rear en-suite 5' double or 2'6 twins

